

Freestyle LibreLinkUp and the Omnipod® 5 System

Setting up Followers

You'll need:

- Your **Omnipod ID and password** (UK site).
- A **LibreView username and password** (or be ready to create one).
- The follower's **name and email address** (the people who will view your glucose).

Step 1: Login into Omnipod UK with your Omnipod ID and Password
<https://www.omnipod.com/en-gb>

Select Region | Healthcare Providers | Contact | Login 1

Omnipod® ID * 2
john123

Password *
.....

Sign In 3

Step 2: Open My Account and Select Account Linking

Home | My Account 1 | Orders | Support

My Account 1 | Orders

Customer Information

Contacts

Training

Consent and Preferences

Account Linking 2

Step 3: Link to LibreView

LibreView 1 | Link

Agree 2

Continue 3

Step 4: Sign into LibreView

Sign in

Enter your email address and password for your LibreView account.

Email

Email address

Required

Password

Password

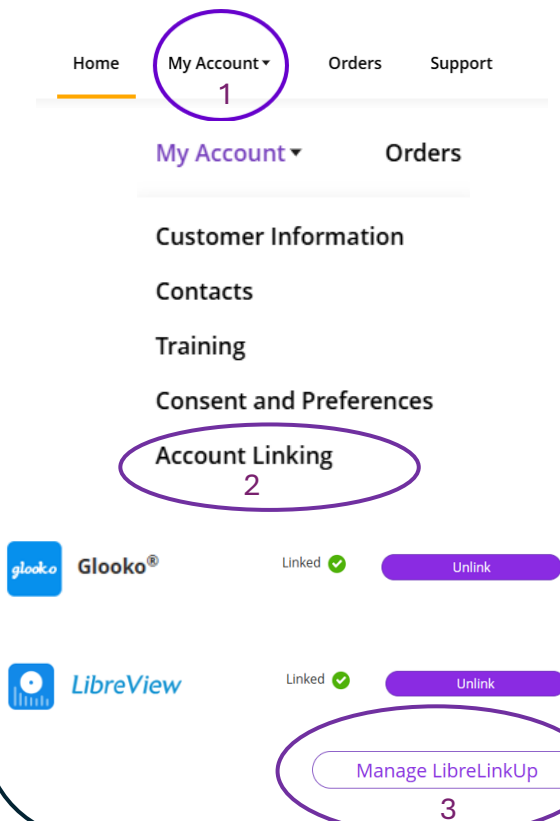
Required

1

Step 5: Confirmation that Data Sharing is enabled

Return to Account Linking 1

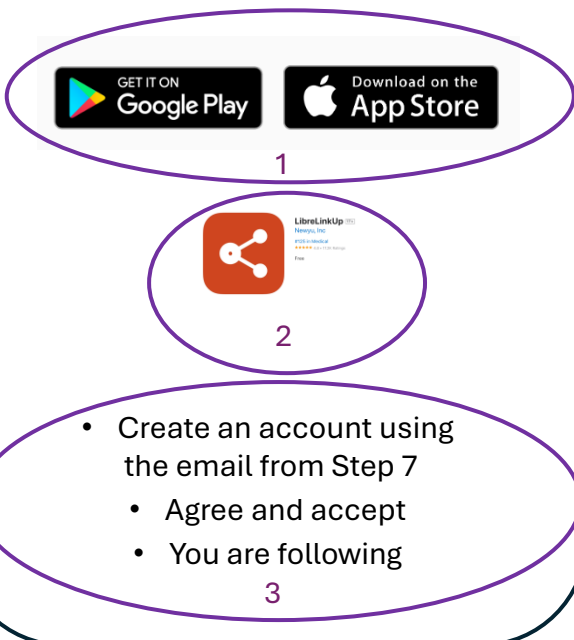
Step 6: Confirm Linking and select "Manage Libre LinkUP"



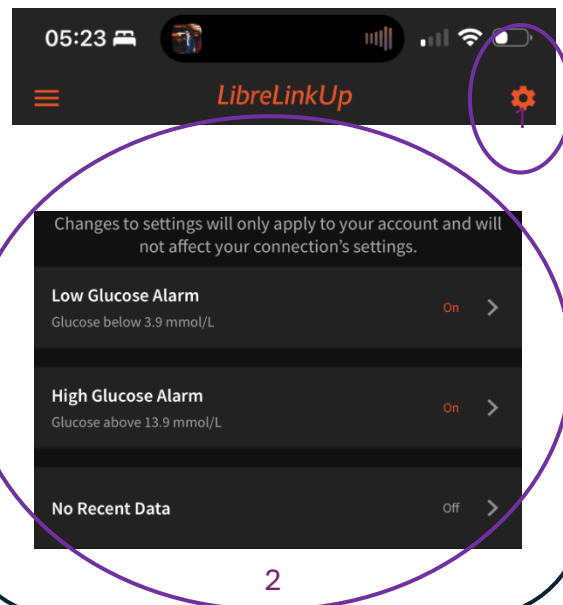
Step 7: Login to LibreView and Add Followers



Step 8: Followers receives email and sets up LibreLinkUP App (check junk)



Step 9: LibreLink UP settings- & Alarms Low Glucose Alarm, High Glucose Alarm, and No Recent Data



Step 10: Repeat this process for up to 20 followers